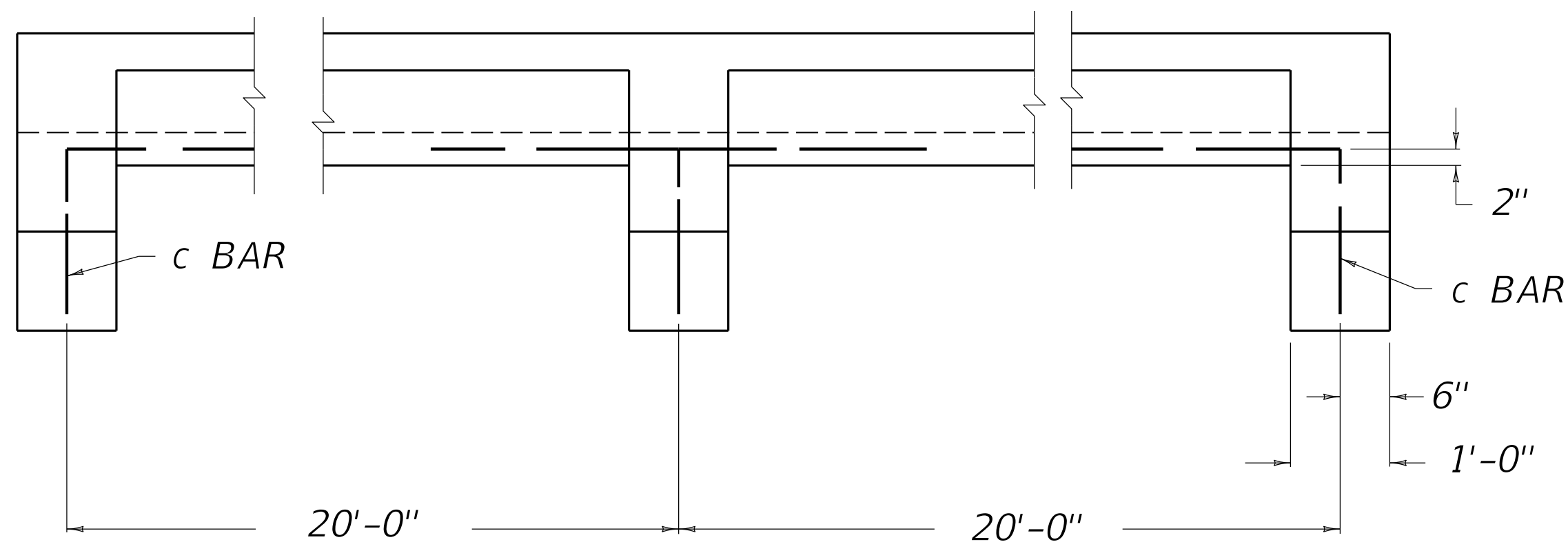
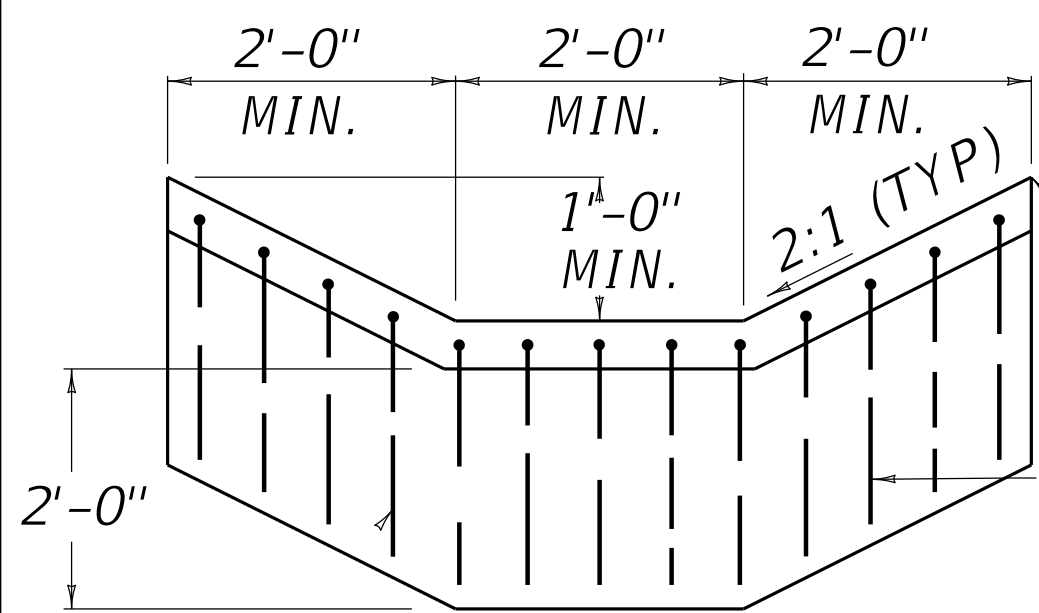


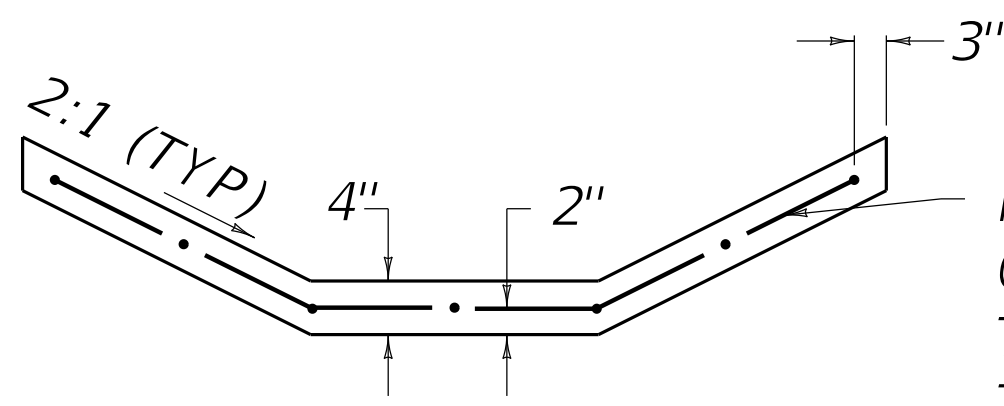
PLAN VIEW



ELEVATION VIEW



SECTION A-A

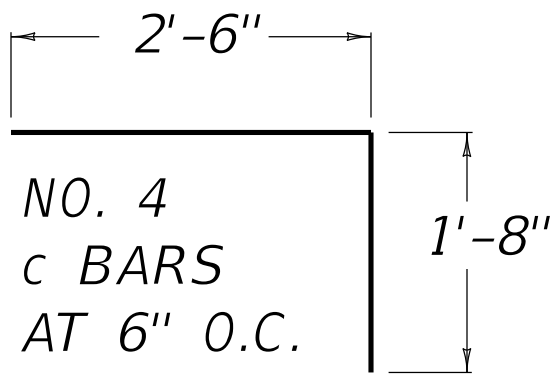


SECTION B-B

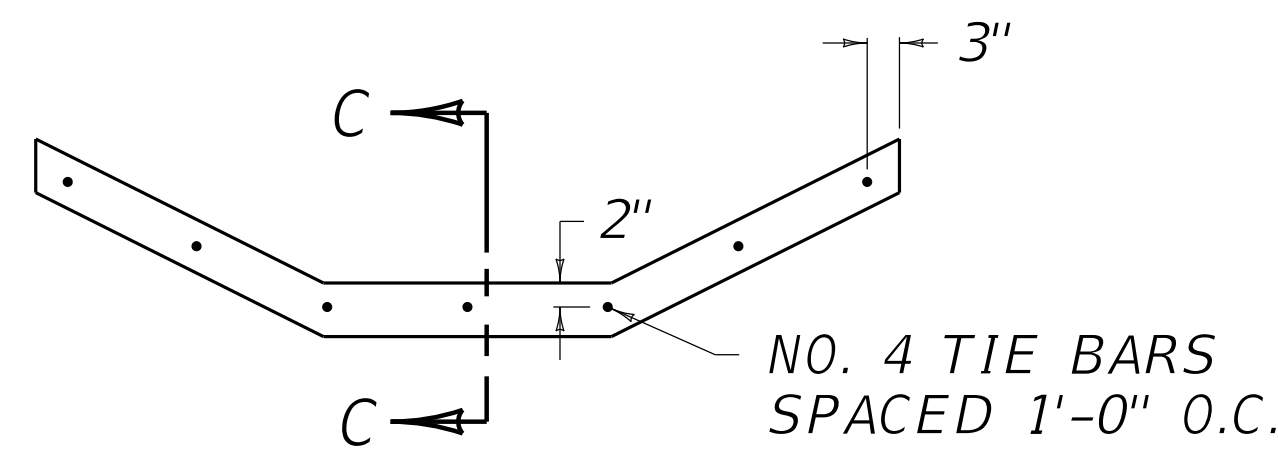
THIS ELEVATION SHALL BE A MIN. OF 12" BELOW EXISTING GROUND LINE.

STEEL SHOWN IS FOR ANCHORS ONLY. FOR CONVENTIONAL STEEL PLACEMENT SEE SECTION B-B.

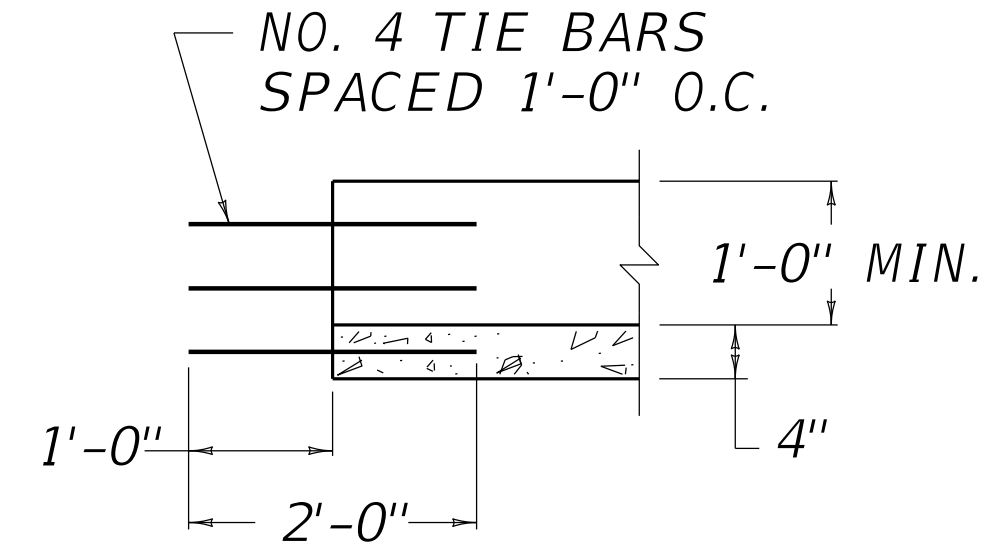
NO. 4 BARS SPACED 1'-0" O.C. LONGITUDINALLY AND TRANSVERSELY THROUGHOUT THE SECTION. (IN ADDITION TO ANCHOR STEEL).



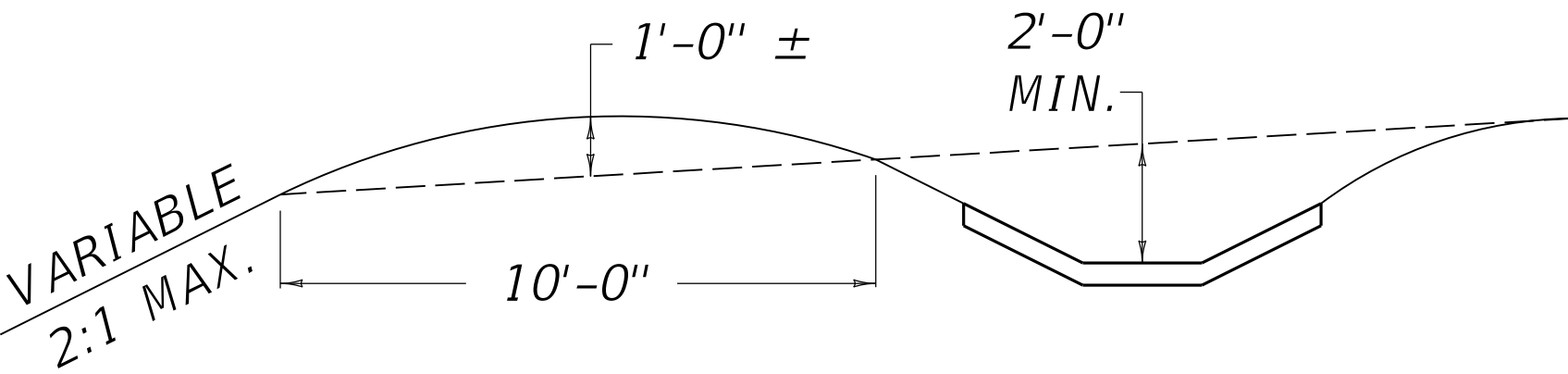
c BAR DETAIL



TIE BAR SECTIONAL VIEW



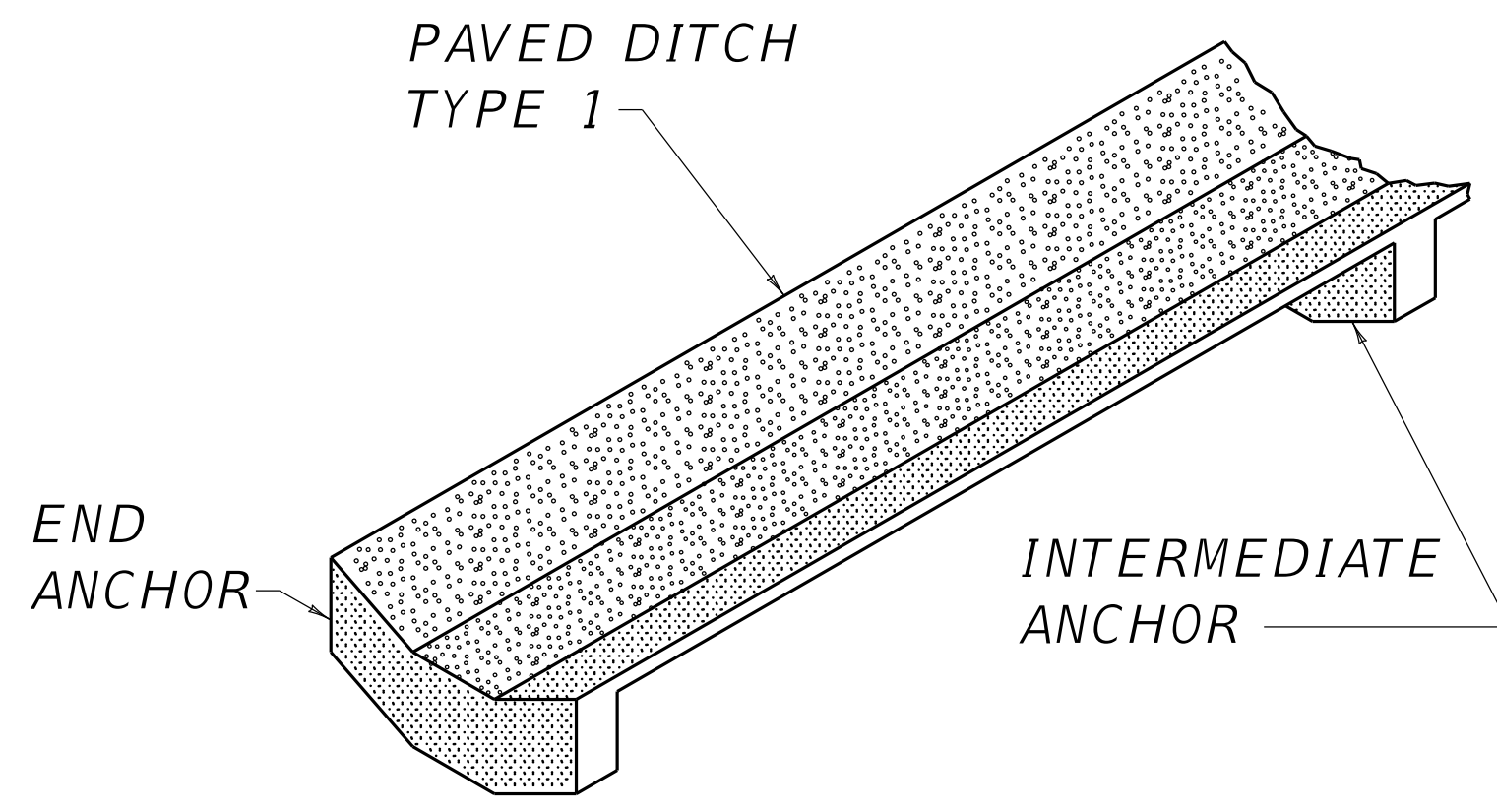
SECTION C-C



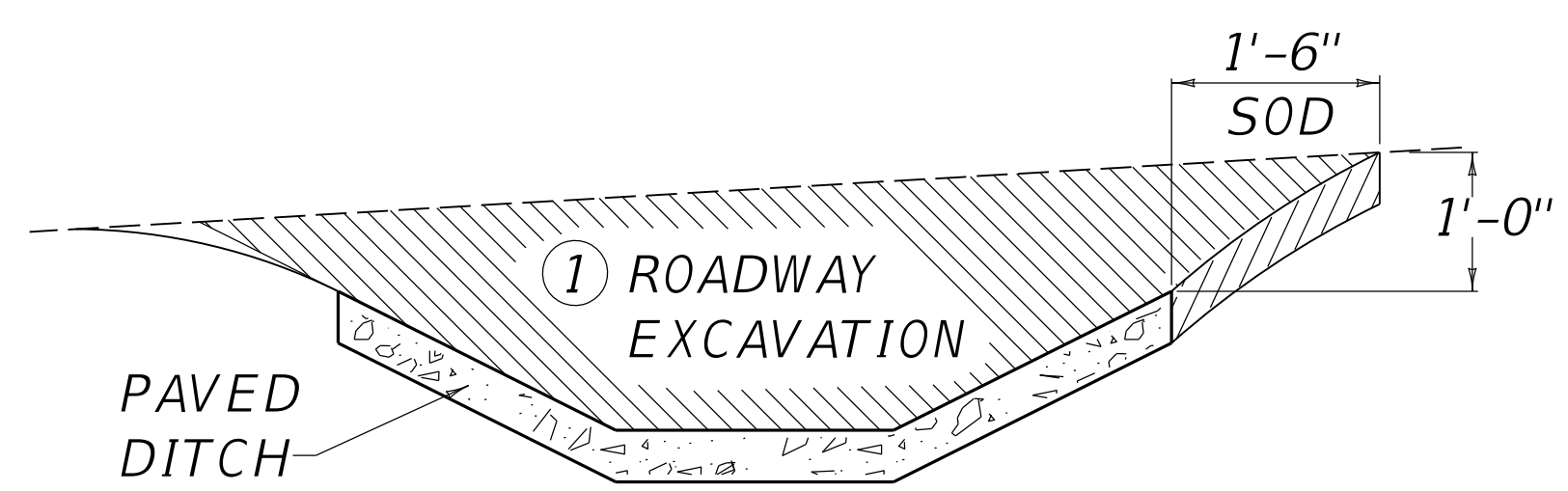
TYPICAL PAVED DITCH (INTERCEPTOR DITCH)

~ NOTES ~

- BID ITEM AND UNIT TO BID  
PAVED DITCH TYPE 1  
SQYD
- ROADWAY EXCAVATION SHALL BE PAID FROM THE TOP OF THE PAVED DITCH SLAB TO THE ORIGINAL GROUND. THE EXCAVATION FROM THE TOP OF THE CONCRETE OF THE PAVED DITCH DOWN, WILL BE INCLUDED IN THE PRICE PAID FOR THE PAVED DITCH INCLUDING THE EXCAVATION FOR THE INTERMEDIATE AND END ANCHORS, AND NO DIRECT PAYMENT WILL BE MADE FOR THIS EXCAVATION.
  - ESTIMATE 0.080 CU. YDS. CLASS A CONCRETE PER LINEAR FT. OF PAVED DITCH AND 0.398 CU. YDS. CLASS A CONCRETE PER ANCHOR BASED ON MINIMUM DIMENSIONS SHOWN ON THIS DRAWING.
  - THE SECTION SHOWN WITHIN THE MINIMUM DIMENSION IS ESTIMATED AT 0.72 SQ. YD. PER LIN. FT.
  - COMPACTION, FINISHING AND CURING SHALL BE THE SAME AS REQUIRED FOR CONCRETE SIDEWALK.
  - IF THE CONTRACTOR ELECTS TO USE A CONSTRUCTION JOINT IN THE POURING OF THE PAVED DITCH, IT SHALL BE CONSTRUCTED AS DETAILED.
  - ANY LENGTH OF LONGITUDINAL REINFORCING STEEL WILL BE PERMITTED PROVIDED A 1'-0" LAP IS USED IN THE SPLICE. ADEQUATE TIES AT THE SPLICE SHALL BE REQUIRED.



ISOMETRIC VIEW



SHOULD THE TERRAIN OF THE EXISTING GROUND BE SO THAT WATER WOULD DRAIN INTO THE DITCH FROM BOTH SIDES, THEN SODDING WILL BE REQUIRED ON BOTH SIDES OF THE DITCH.

APPROX. STEEL QUANTITIES FOR MINIMUM SECTION SHOWN	
END ANCHORS (EACH)	36.19 LBS.
INTERMEDIATE ANCHORS (EACH)	36.19 LBS.
CONSTRUCTION JOINTS (EACH)	9.352 LBS.
BARS PER SQ. YD. OF DITCH	12.047 LBS.



COMMONWEALTH OF KENTUCKY  
DEPARTMENT OF HIGHWAYS



DITCHING

PAVED DITCH TYPE 1

STANDARD DRAWING NUMBER  
RDD-001-06

DRAINAGE

REVISION DATE: 12/01/2015  
REVISION NUMBER: 0

SUBMITTED: 12-01-2015 DATE  
DIVISION DIRECTOR  
APPROVED: 12-01-2015 DATE  
STATE HIGHWAY ENGINEER